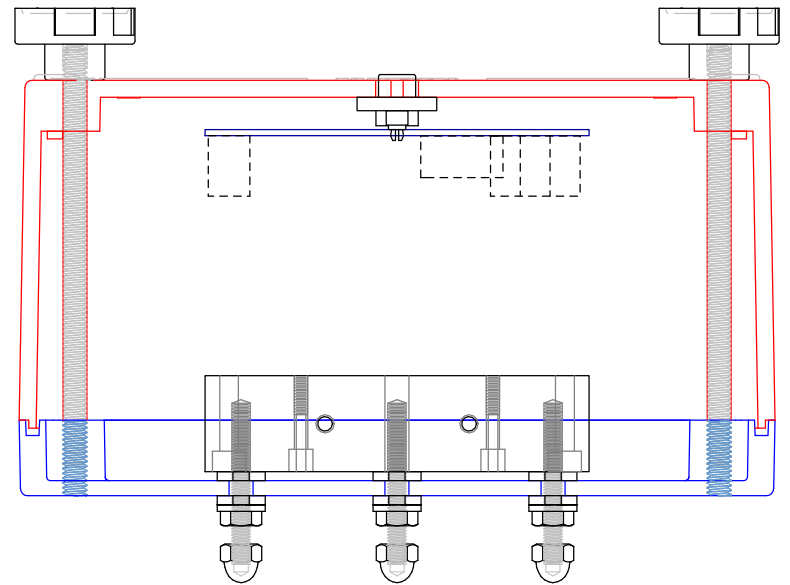
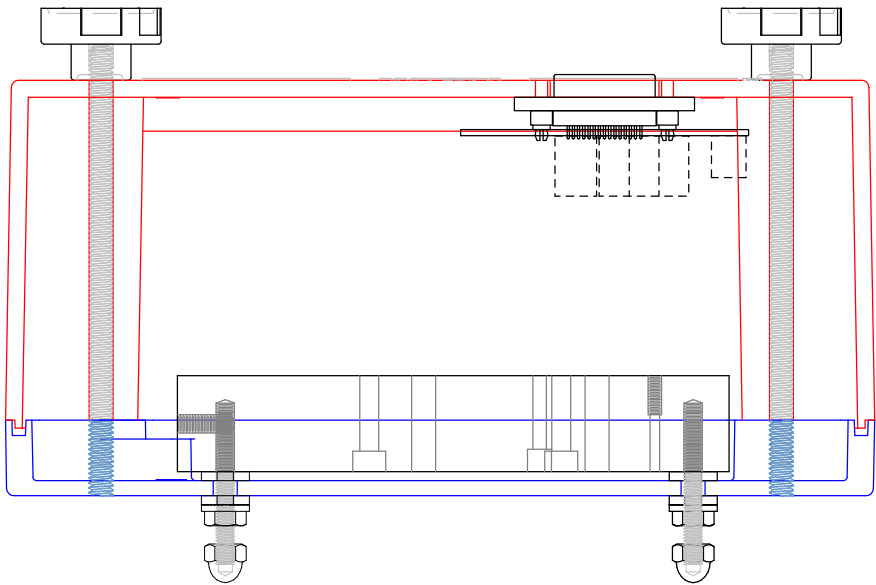
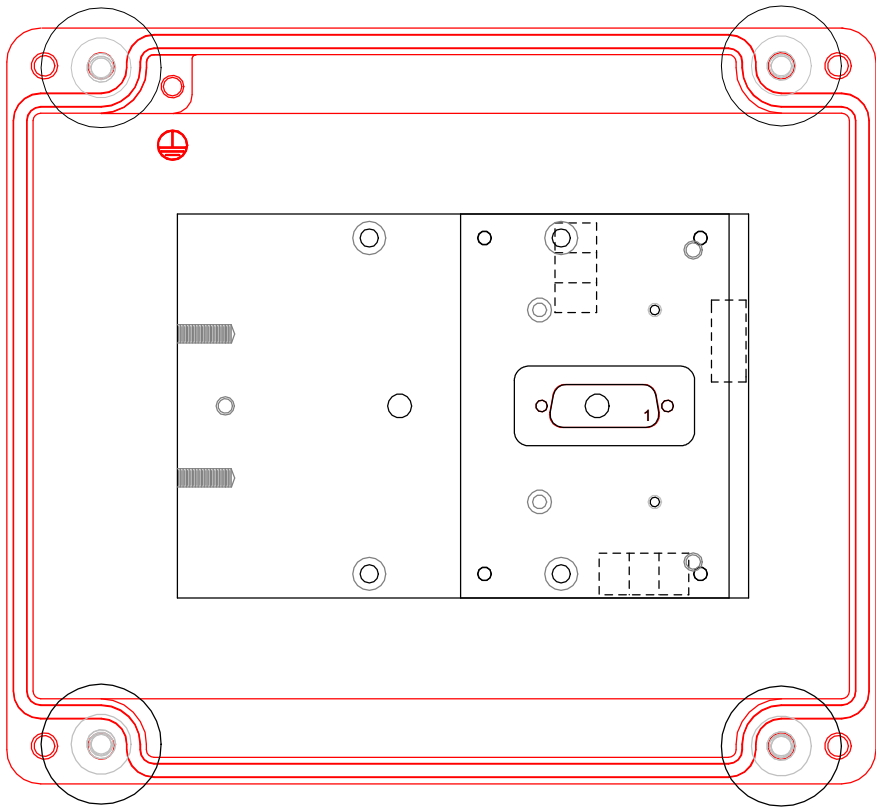
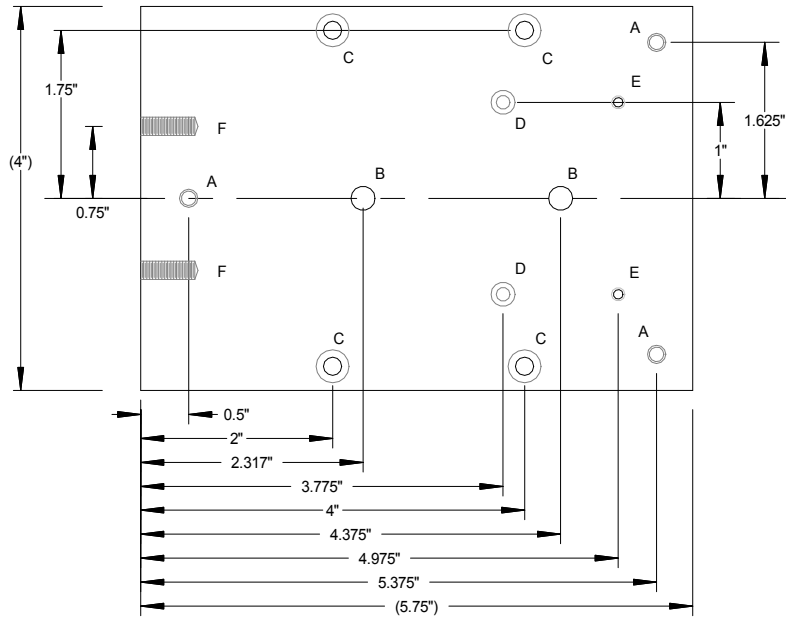


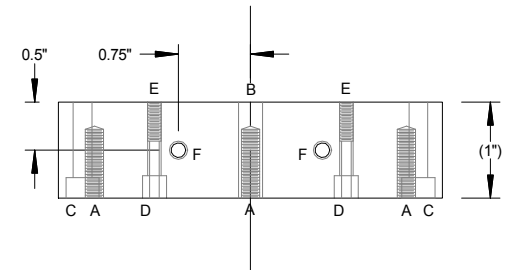
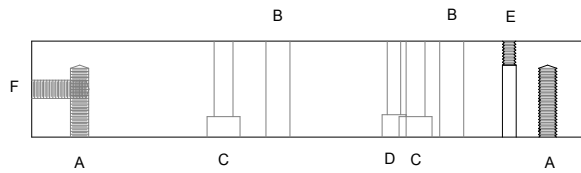
		Yuma2 Force Balance Vertical Seismometer	
Rev. 4.3	5 March, 2018		
	B. Nordgren		



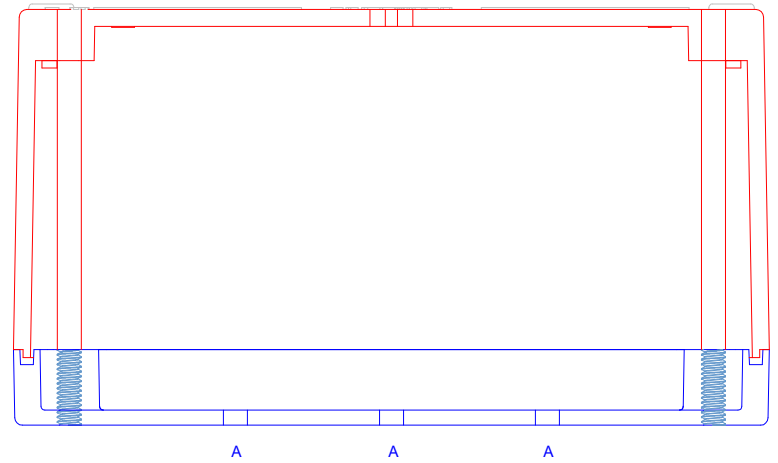
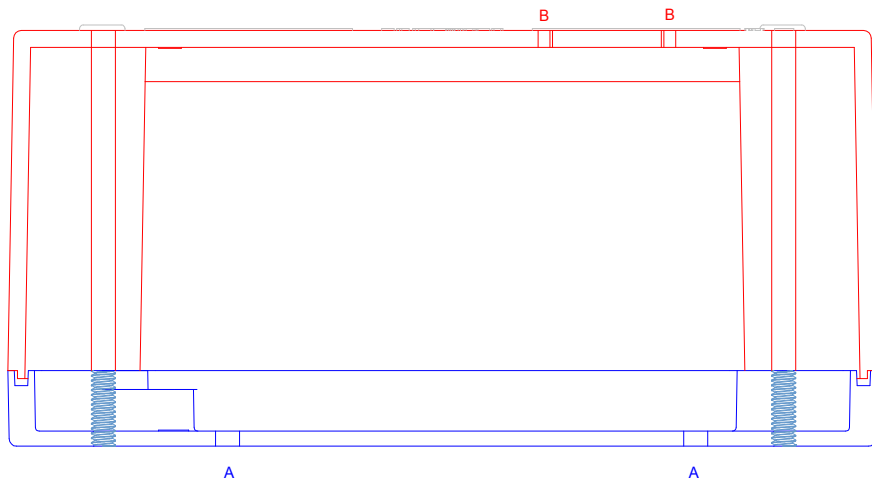
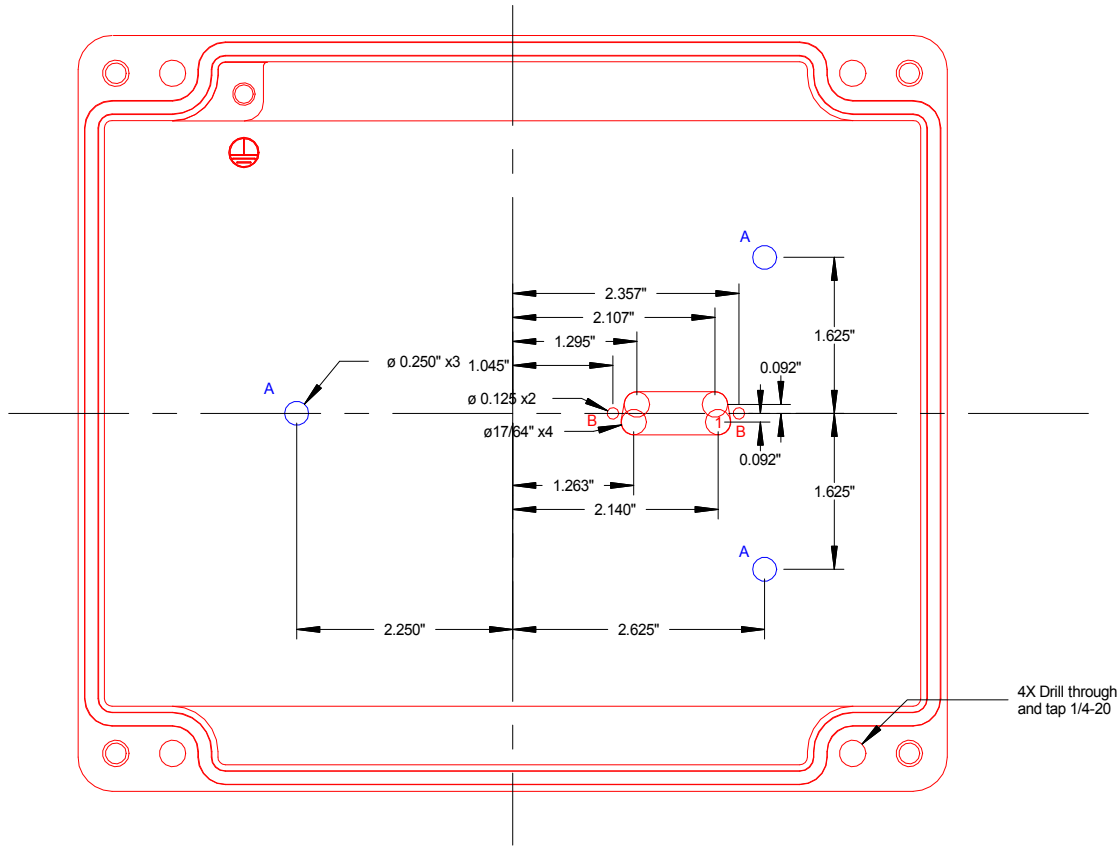
	Yuma2 Warplless Design	
Rev. 4.3	29 June, 2015	
	B. Nordgren	



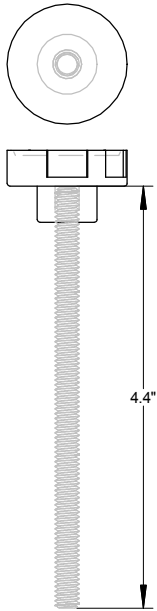
- A - Drill #21 0.75" deep and tap 10-32
- B - Drill through 0.25" dia.
- C - Drill through #21
Counterbore 11/32" dia 0.215" deep
- D - Drill through #27
Counterbore 0.25" dia 0.234" deep
- E - Drill through #36
Counterbore #27 0.75" deep
Tap 6-32
- F - Drill #21 0.562" deep and tap 10-32



Yuma2 Base	
Rev. 4.3	11 November, 2015 B. Nordgren
6061-T6 Aluminum 1" x 4"	

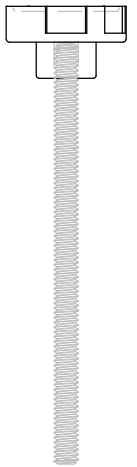
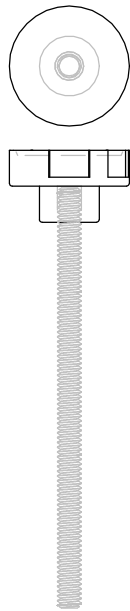


		Yuma2 Case	
Rev. 4.3	9 July, 2015		Hammond Mfg. # 15902231
	B. Nordgren		

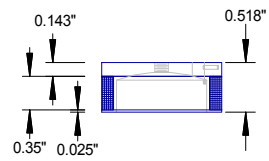
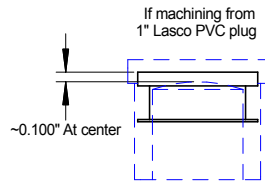
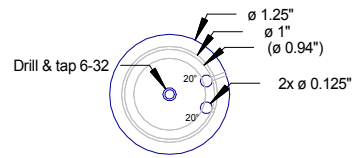


1/4-20 Threaded
Brass Rod

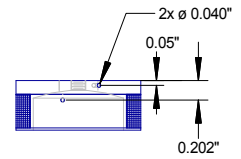
4.4"



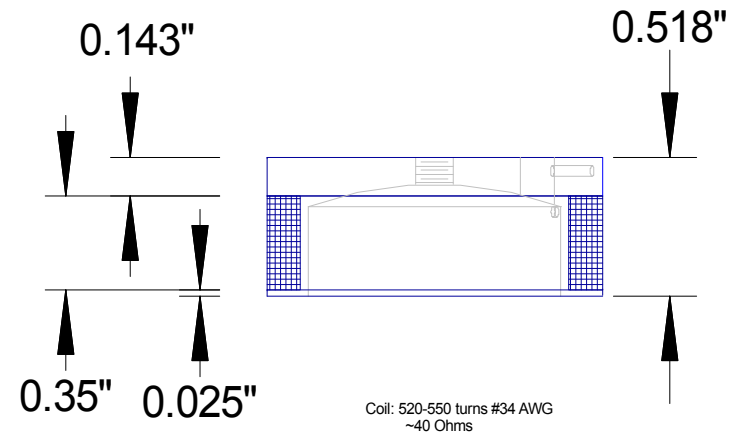
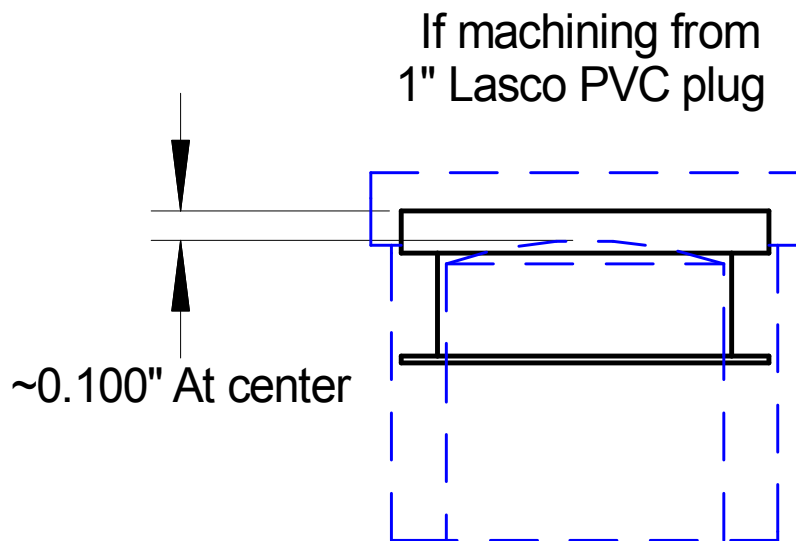
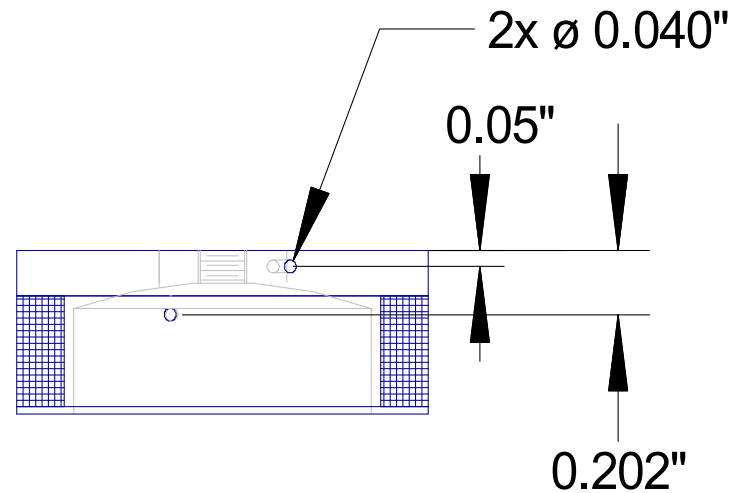
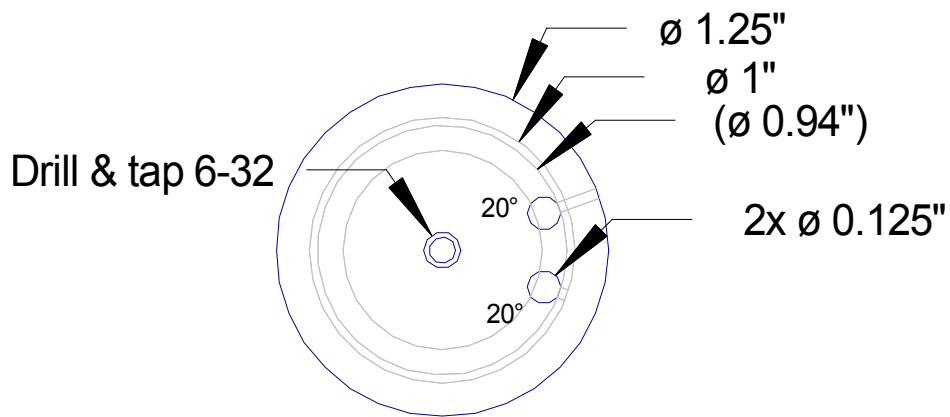
	Yuma2 Knobs	
Rev. 4.3	28 June, 2015 B. Nordgren	Threaded 1/4-20 McMaster# 6479K54



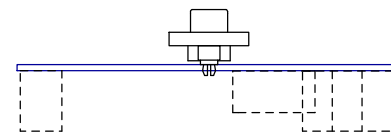
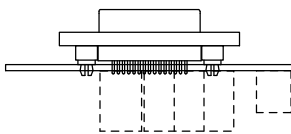
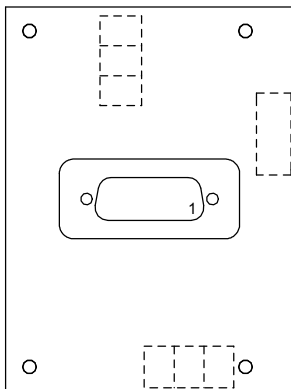
Coil: 520-550 turns #34 AWG
~40 Ohms



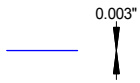
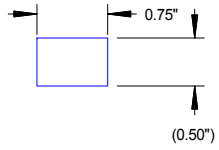
		Yuma2 Coil	
Rev. 4.3	15 November, 2015		PVC Plastic #34 AWG Wire
	B. Nordgren		



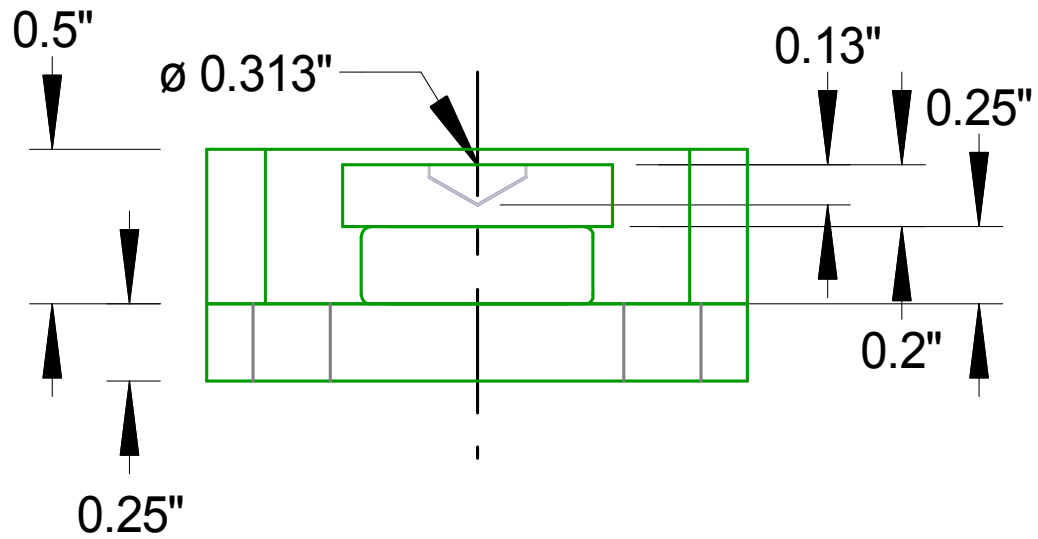
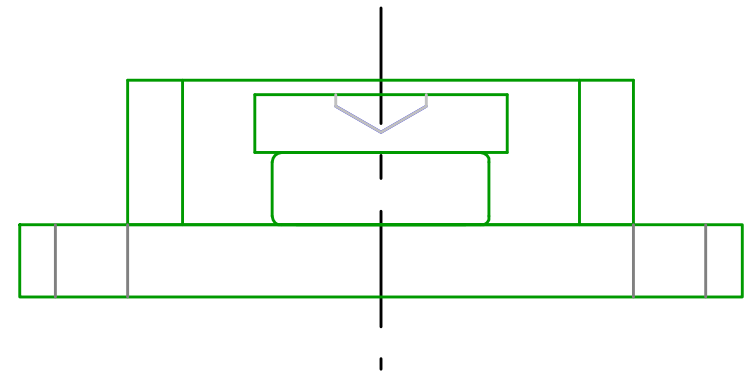
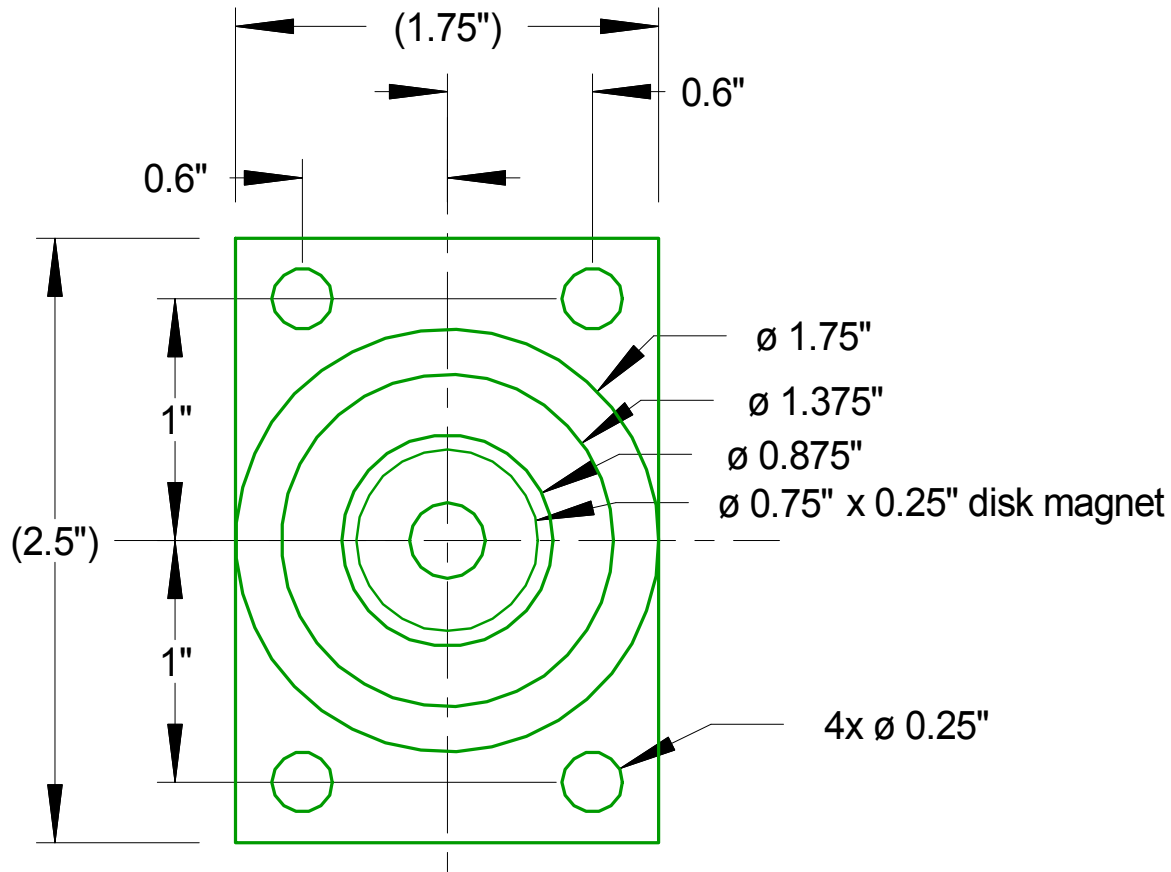
		Yuma2 Coil
Rev. 4.3	15 November, 2015 B. Nordgren	PVC Plastic #34 AWG Wire



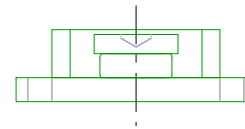
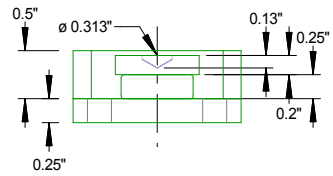
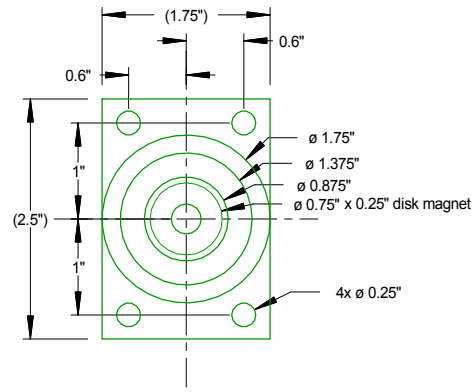
	Yuma2 Electronics Board	
Rev. 4.3	28 June, 2015	
	B. Nordgren	



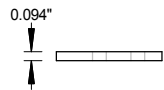
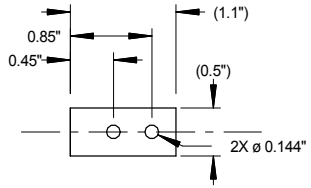
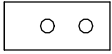
	Yuma2 Flexures	
Rev. 4.3	28 June, 2015 B. Nordgren	0.5" x 0.003" Kapton HN Polyimide Film



		Yuma2 Magnet	
Rev. 4.3	28 June, 2015 B. Nordgren	1018 Low Carbon Steel N45+ NdFeB Magnet	



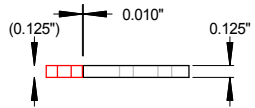
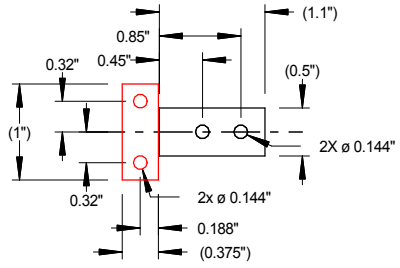
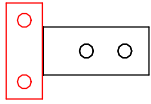
		Yuma2 Magnet	
Rev. 4.3	28 June, 2015		1018 Low Carbon Steel N45+ NdFeB Magnet
	B. Nordgren		



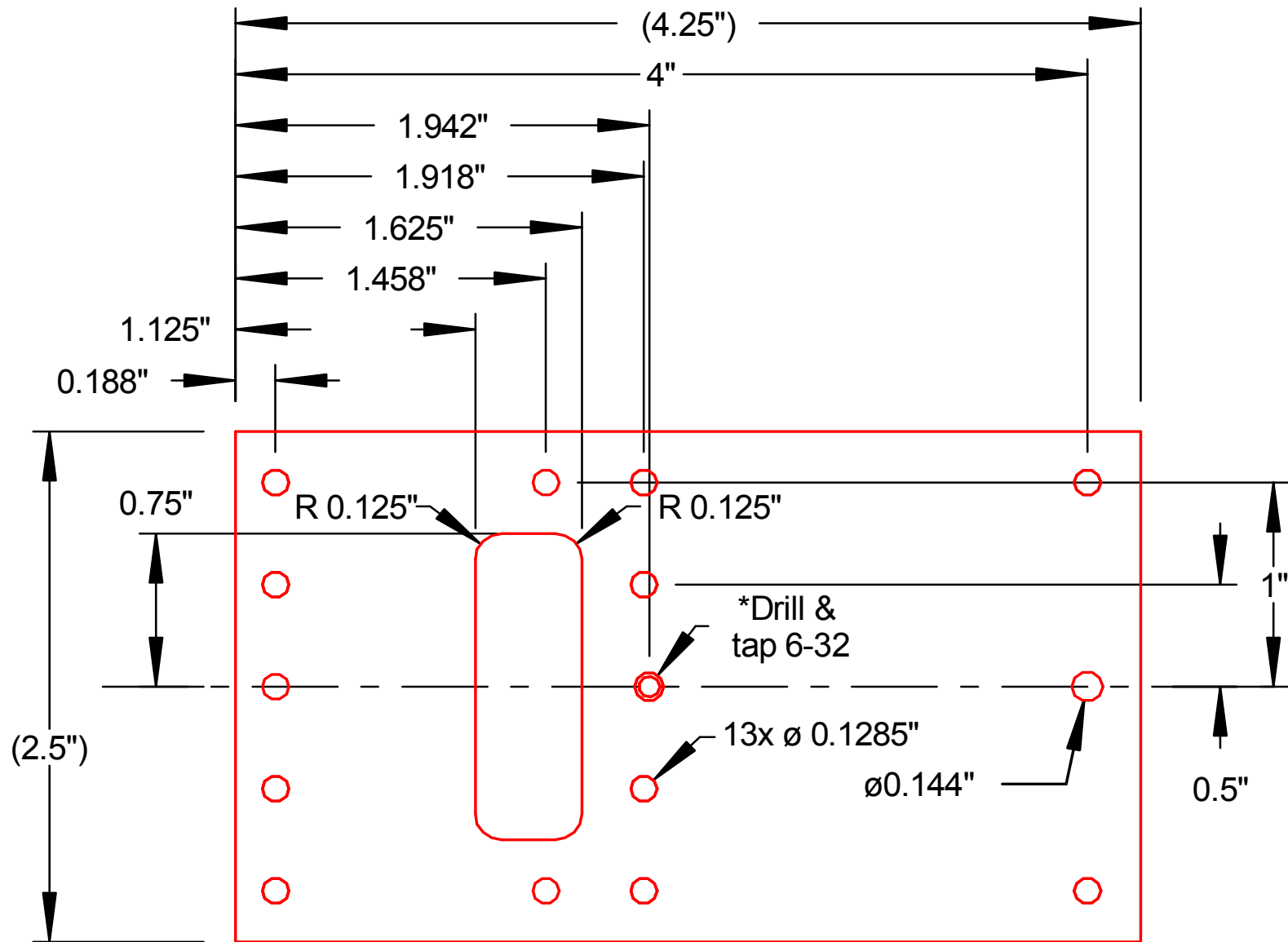
	Yuma2 Pivot Shims	
Rev. 4.3	28 June, 2015 B. Nordgren	360 or 385 Brass



	Yuma2 Sensor Plate	
Rev. 4.3	28 June, 2015	
	B. Nordgren	

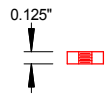
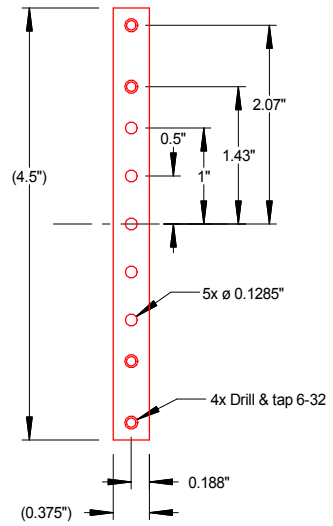


		Yuma2 Pivot Clamps	
Rev. 4.3	28 June, 2015		360 or 385 Brass 1/8"
	B. Nordgren		

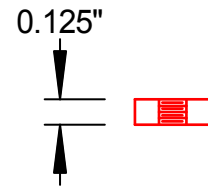
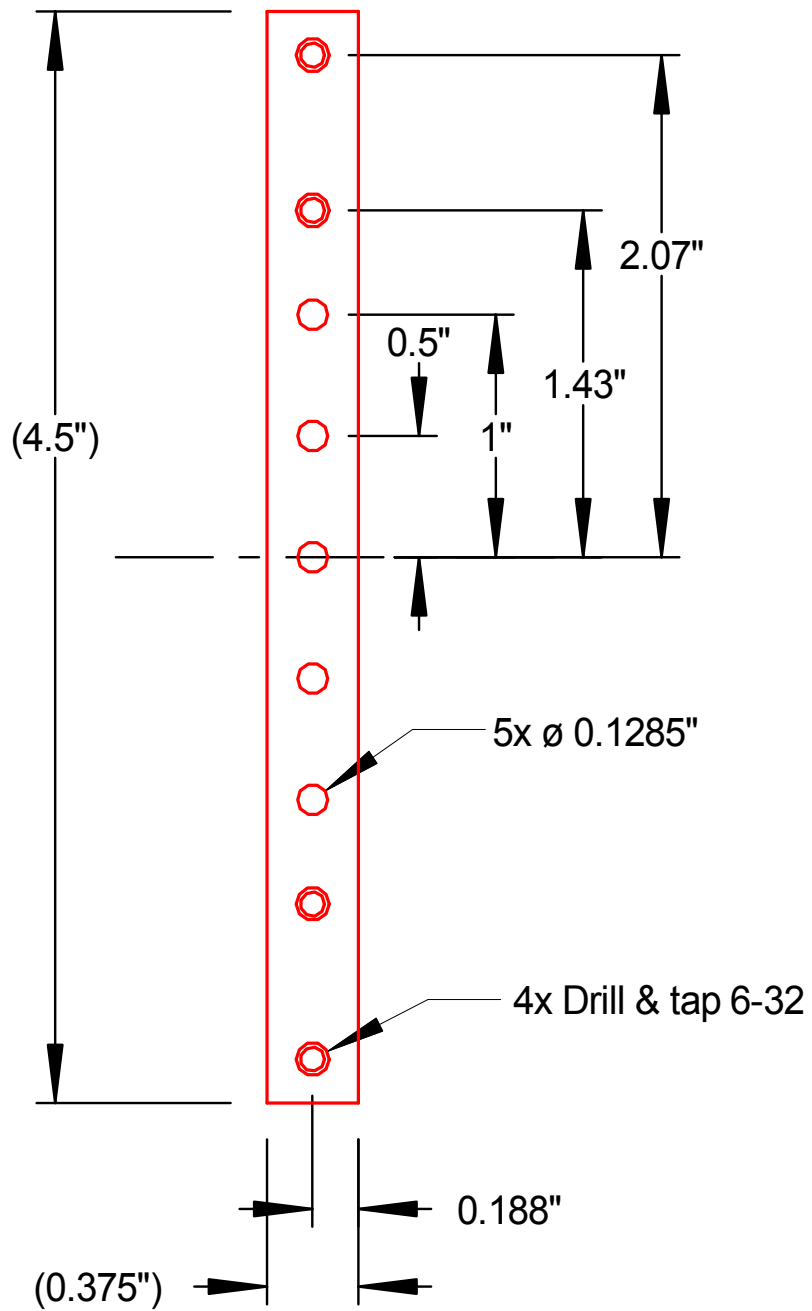


* After assembling

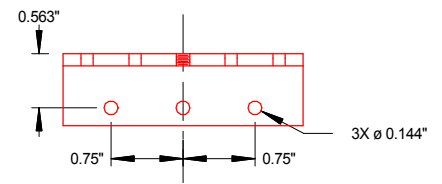
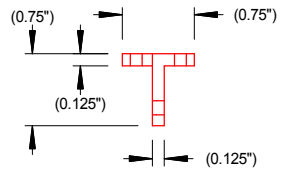
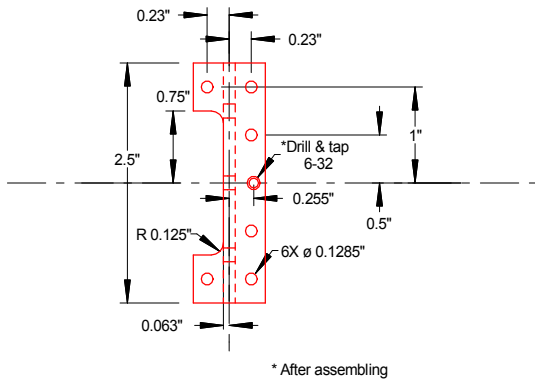
Yuma2 Top Plate		
Rev. 4.3	29 June, 2015 B. Nordgren	6061-T6 Aluminum 1/8" x 2.5"



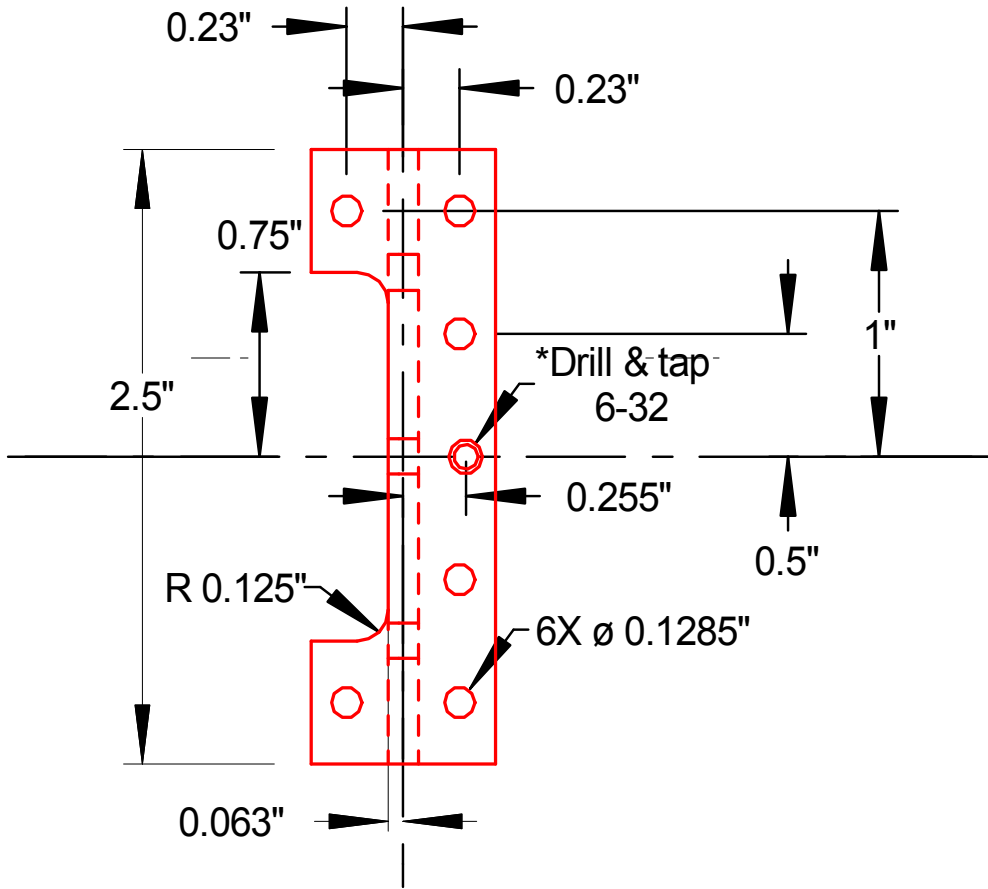
		Yuma2 Spacer-1	
Rev. 4.3	28 June, 2015		360 or 385 Brass 1/8" x 3/8"
	B. Nordgren		



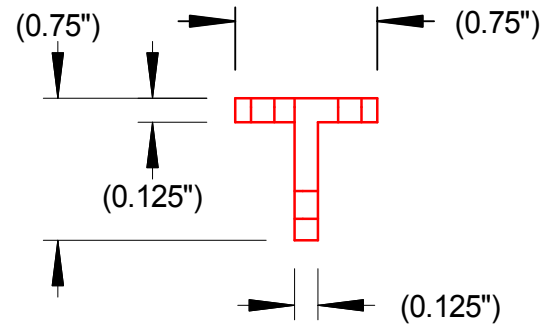
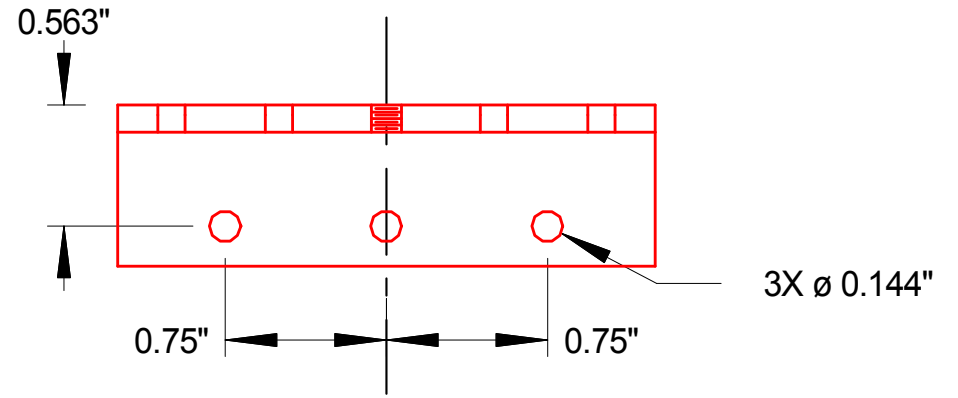
Yuma2 Spacer-1		
Rev. 4.3	28 June, 2015	360 or 385 Brass
	B. Nordgren	1/8" x 3/8"



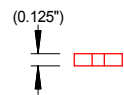
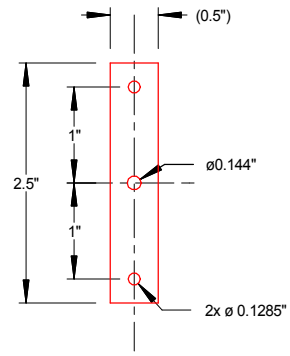
		Yuma2 Spacer-2	
Rev. 4.3	28 June, 2015 B. Nordgren	6063-T5 Aluminum 3/4" x 3/4" x 1/8"	



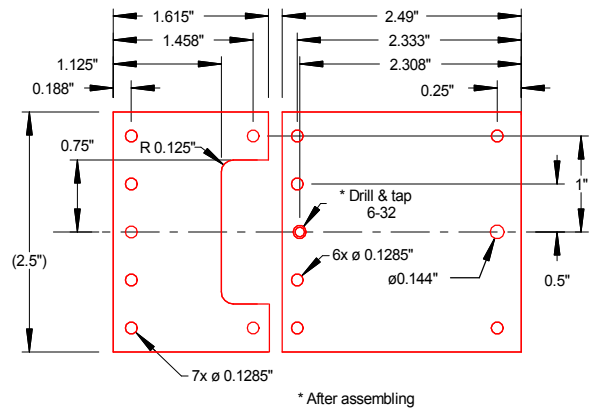
* After assembling



		<h2>Yuma2 Spacer-2</h2>	
Rev. 4.3	28 June, 2015		6063-T5 Aluminum 3/4" x 3/4" x 1/8"
	B. Nordgren		

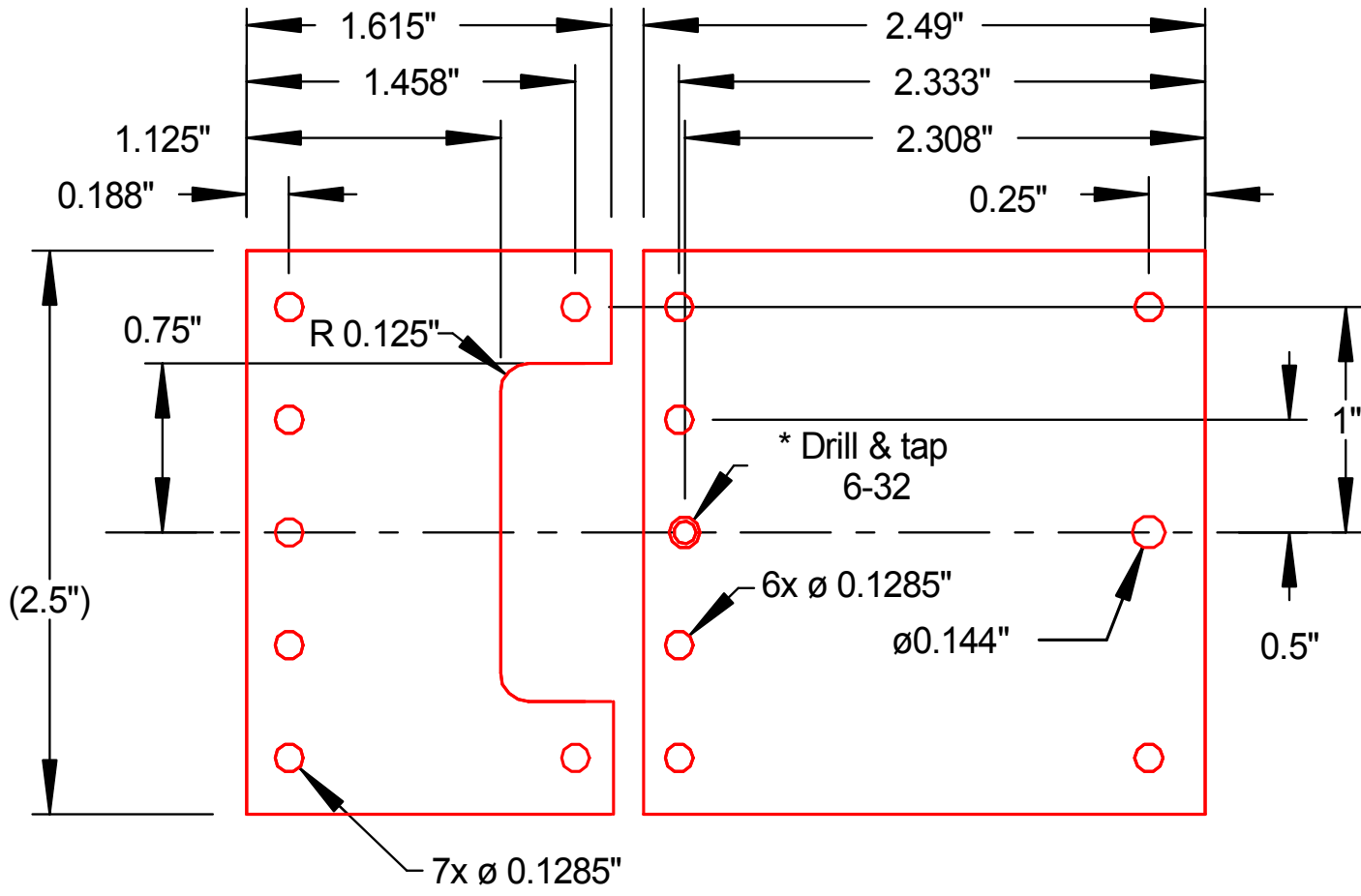


		Yuma2 Spacer-3	
Rev. 4.3	28 June, 2015		6061-T6 Aluminum 1/8" x 1/2"
	B. Nordgren		



note: Tap holes
after assembly.

Yuma2 Bottom Plates		
Rev. 4.3	28 June, 2015 B. Nordgren	6061-T6 Aluminum 2.5" x 0.25"

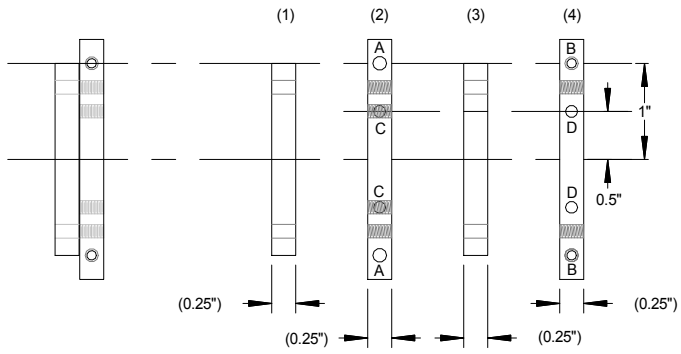


* After assembling

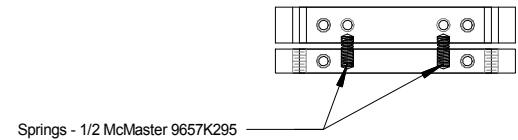
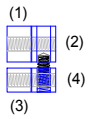
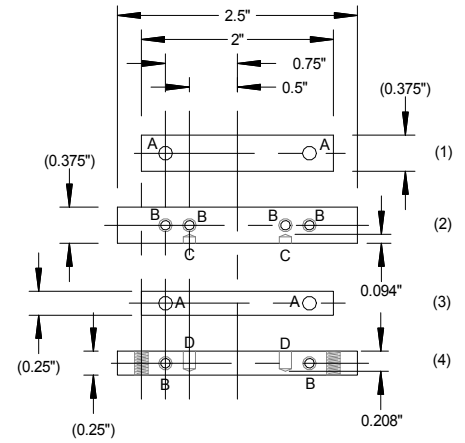


note: Tap holes after assembly.

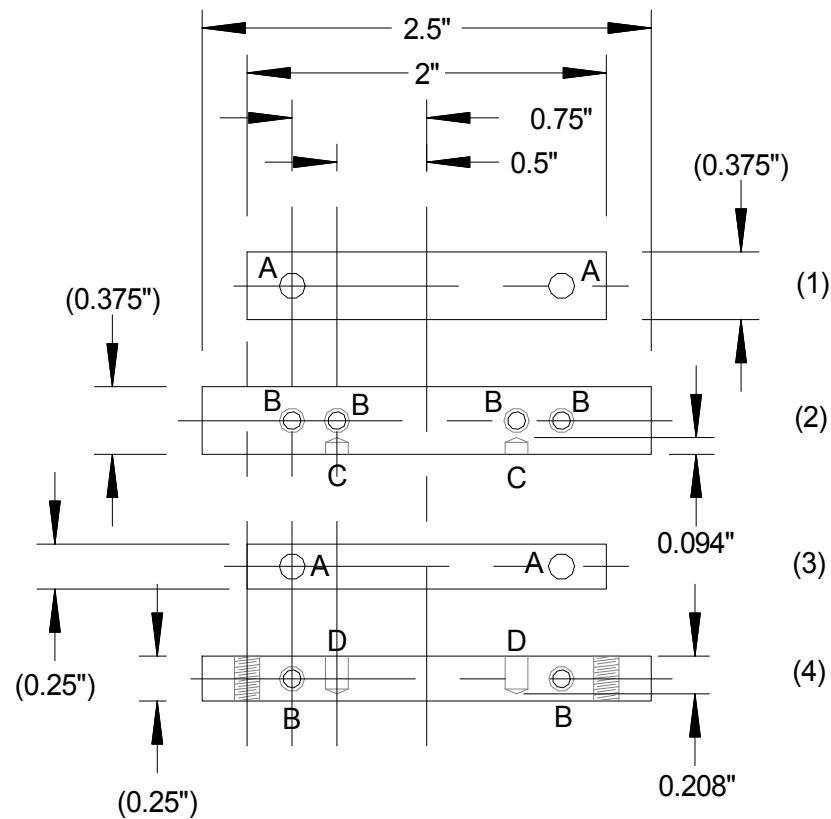
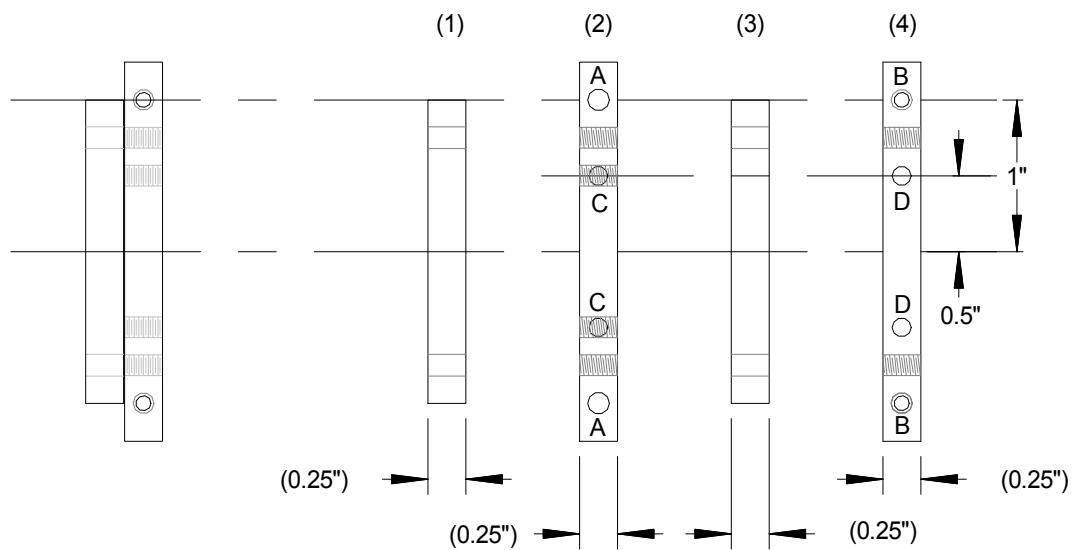
Yuma2 Bottom Plates		
Rev. 4.3	28 June, 2015 B. Nordgren	6061-T6 Aluminum 2.5" x 0.25"



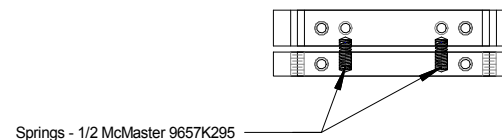
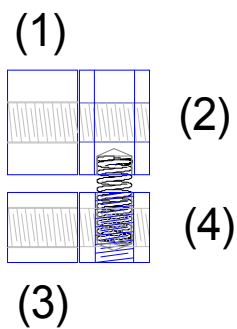
- A - Drill through 0.144" dia
- B - Drill through #36 Tap 6-32
- C - Drill 1/8" dia 0.094" deep
- D - Drill 1/8" dia 0.208" deep



Yuma2 Spring Clamp-1	
Rev. 4.3	9 July, 2015
	B. Nordgren
360 or 385 Brass	

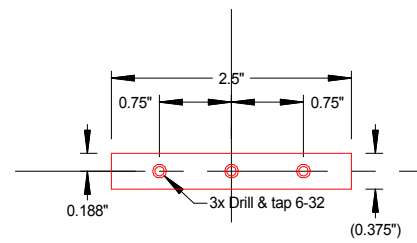
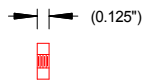


- A - Drill through 0.144" dia
- B - Drill through #36 Tap 6-32
- C - Drill 1/8" dia 0.094" deep
- D - Drill 1/8" dia 0.208" deep

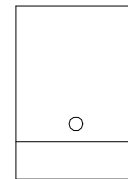
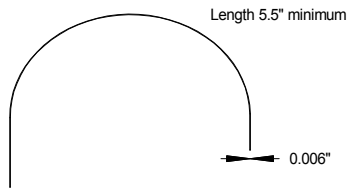
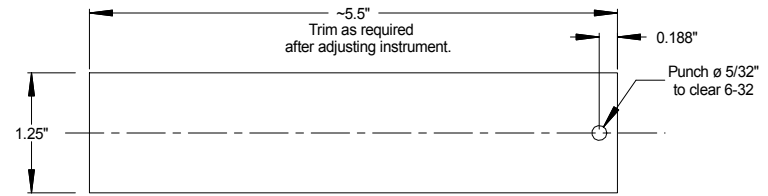


Springs - 1/2 McMaster 9657K295

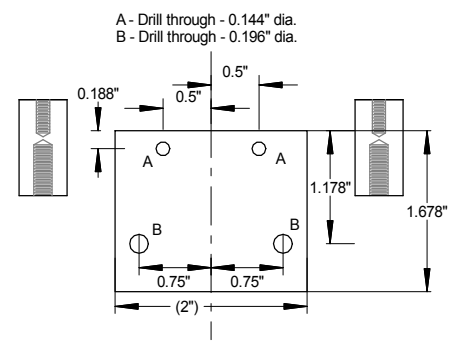
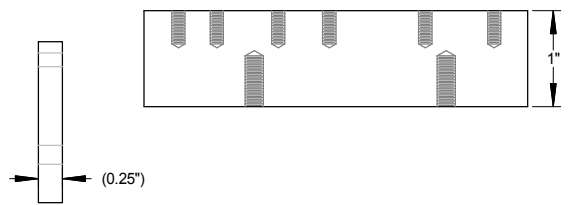
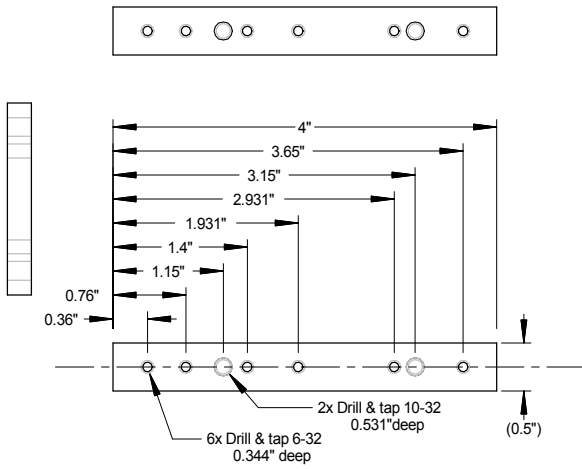
Yuma2 Spring Clamp-1	
Rev. 4.3	9 July, 2015 B. Nordgren
360 or 385 Brass	



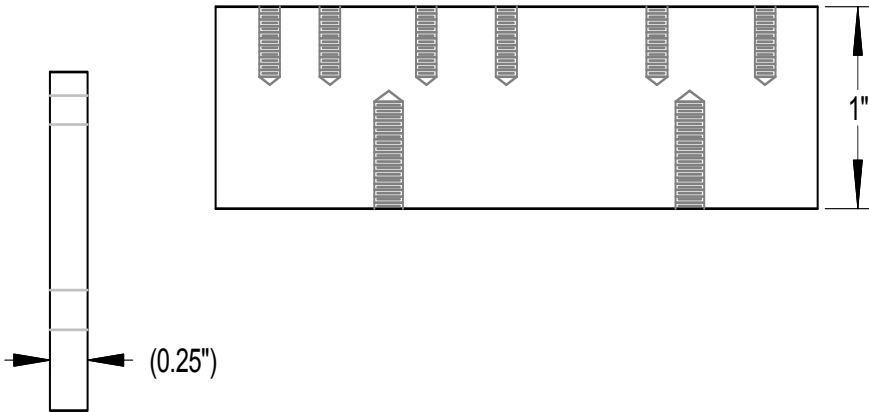
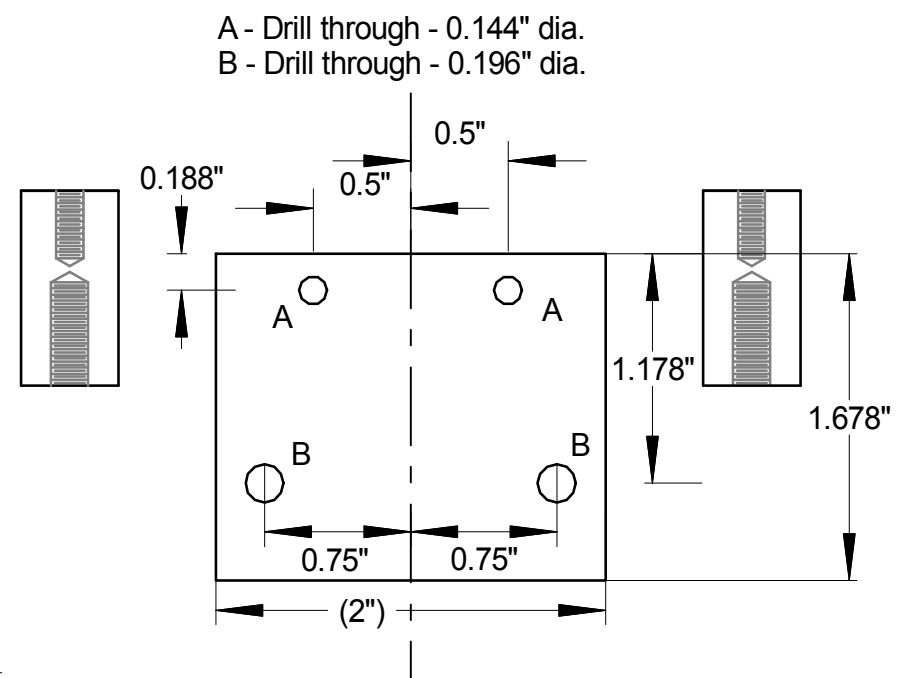
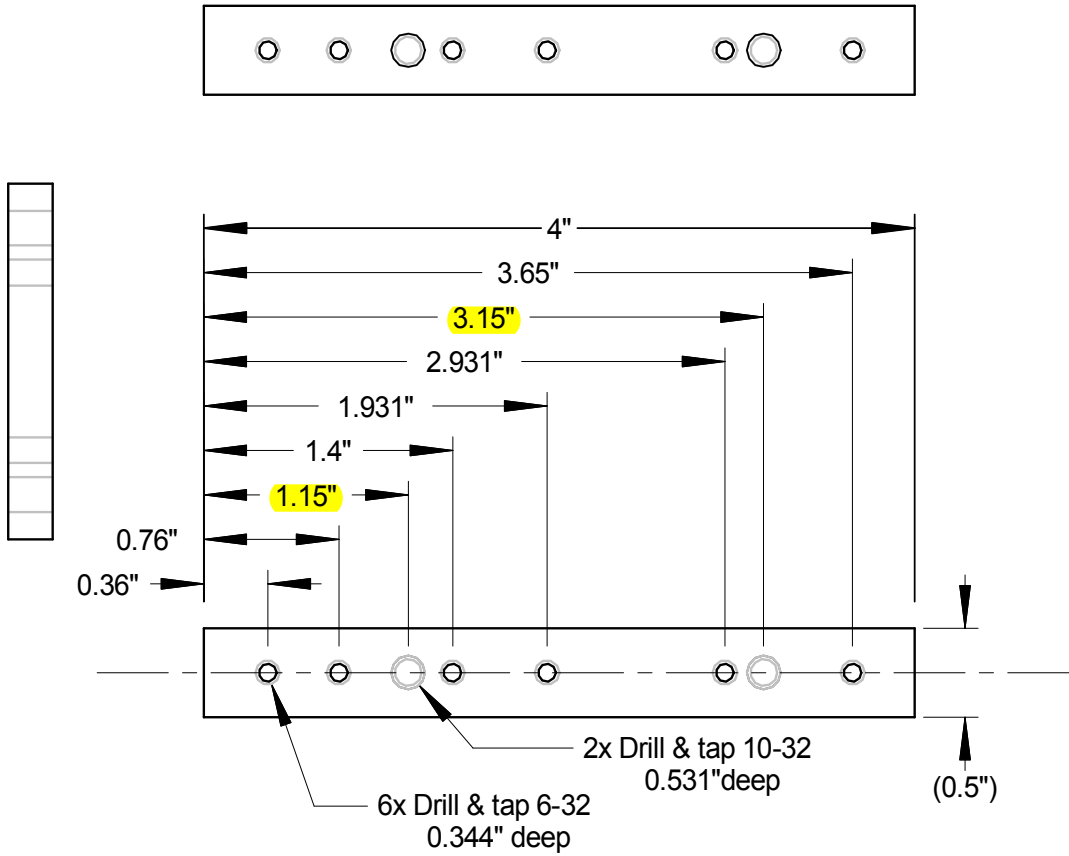
		Yuma2 Spring Clamp-2	
Rev. 4.3	5 March, 2018		360 or 385 Brass 1/8" x 3/8" * May change to Aluminum
	B. Nordgren		



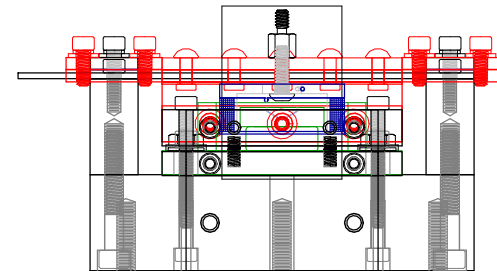
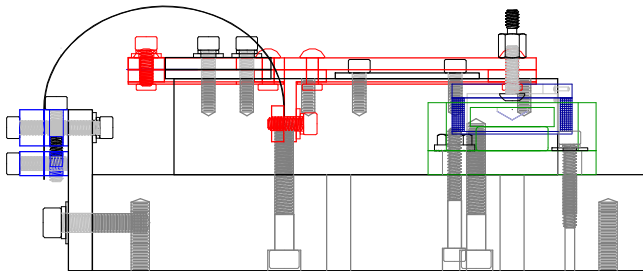
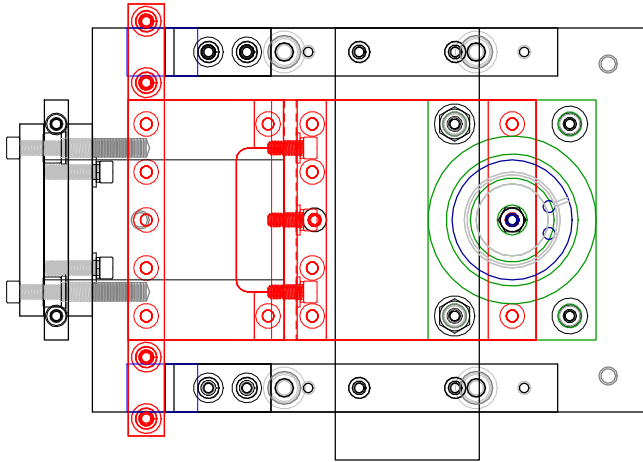
	Yuma2 Spring	
Rev. 4.3	29 June, 2015 B. Nordgren	0.006" 17-7 Stainless Hardened to State CH900



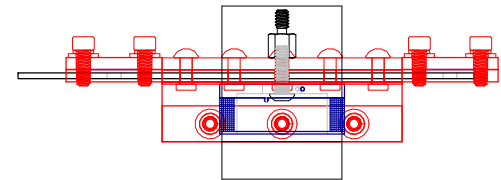
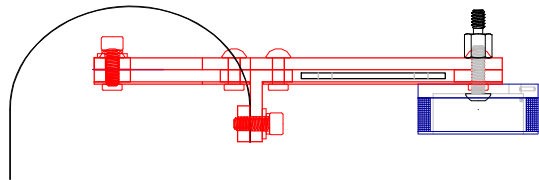
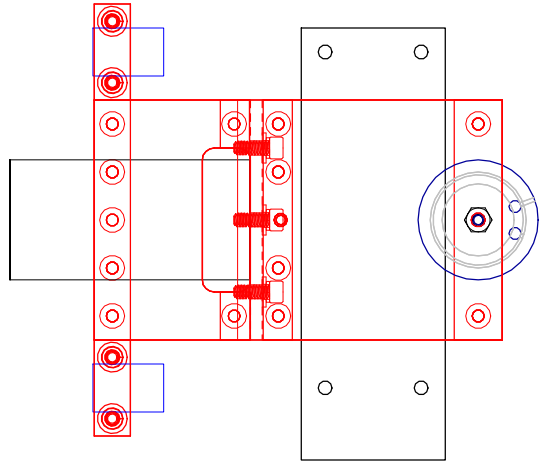
Yuma2 Towers		
Rev. 4.3	29 June, 2015 B. Nordgren	6061-T6 Aluminum



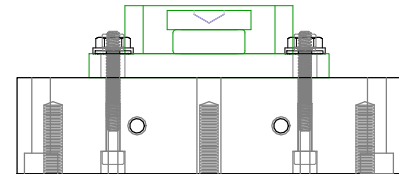
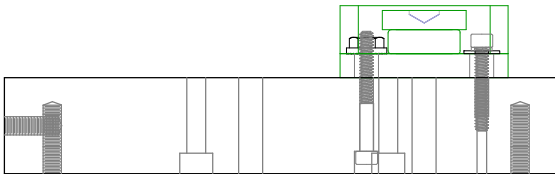
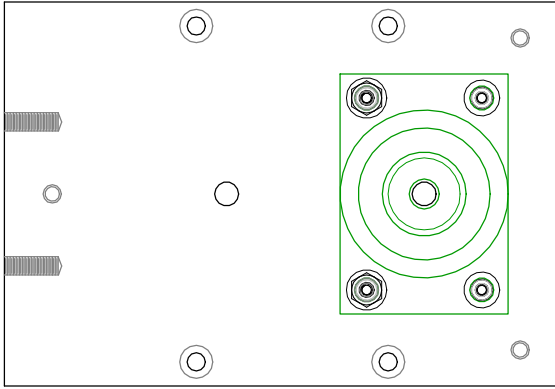
		Yuma2 Towers	
Rev. 4.3	29 June, 2015 B. Nordgren	6061-T6 Aluminum	



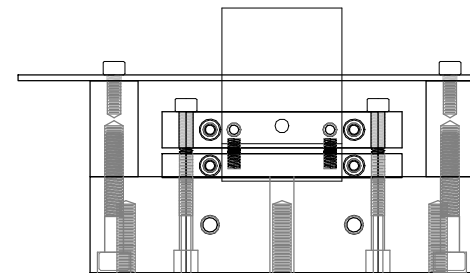
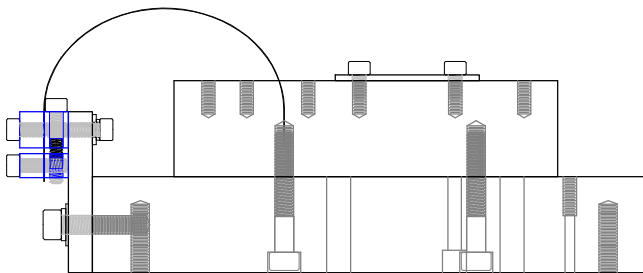
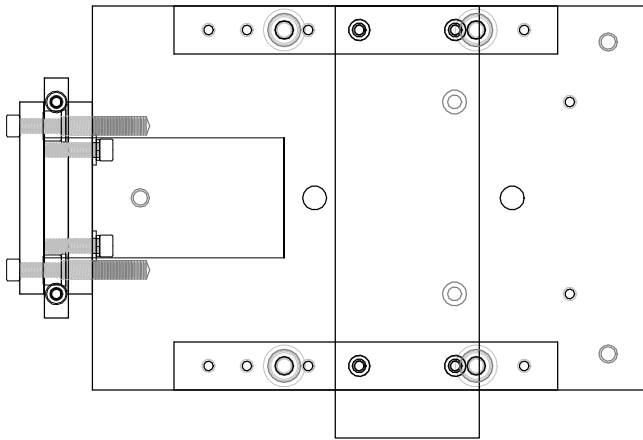
		Yuma2 Mechanical Assembly	
Rev. 4.3	29 June, 2015		
	B. Nordgren		



	Yuma2 Boom Assembly	
Rev. 4.3	29 June, 2015	
	B. Nordgren	



	Yuma2 Magnet Assembly	
Rev. 4.3	29 June, 2015	
	B. Nordgren	



		Yuma2 Base Assembly	
Rev. 4.3	29 June, 2015		
	B. Nordgren		